

# windream for SAP Applications



**The Ideal ECM Solution for SAP ECC 6.0**



# The Ideal ECM Solution for SAP ERP

Many companies working with SAP applications are looking for an efficient and user-friendly Enterprise Content Management system (ECM system) for the safe and convenient management of business-relevant information and documents, also outside of their SAP environment. Within the ECM sector, windream has proven its value as a top-modern system in recent years, and is used by many national and international companies. However, until now, SAP users had to cope with a strict separation between their SAP-specific applications and business processes on the one hand and the many file formats of Windows and other operating systems on the other. Now, this has changed.

The software solutions for SAP applications developed by windream GmbH close a gap between SAP ERP and convenient ECM solutions. With **windream ArcLink** – the archive interface for the SAP ArchiveLink interface, certified by SAP AG – and the applications **windream DirectLink** and **windream SAPcommand**, SAP users are now presented with numerous new possibilities which were either impossible to realize until now, or required considerable efforts.

## Certified by SAP

**Continuous certification for SAP applications since 1994**

The interaction between SAP ECC 6.0 and windream on the basis of the windream ArcLink archive interface has

been officially and **fully certified** and awarded with the title “SAP Certified – Integration with SAP NetWeaver” by SAP AG. This full certification is valid for the HTTP Content Server, OLE Frontend and Barcode BAPI. The certification has been continuously valid **since 1994**.

**SAP® Certified**  
Integration with SAP NetWeaver®

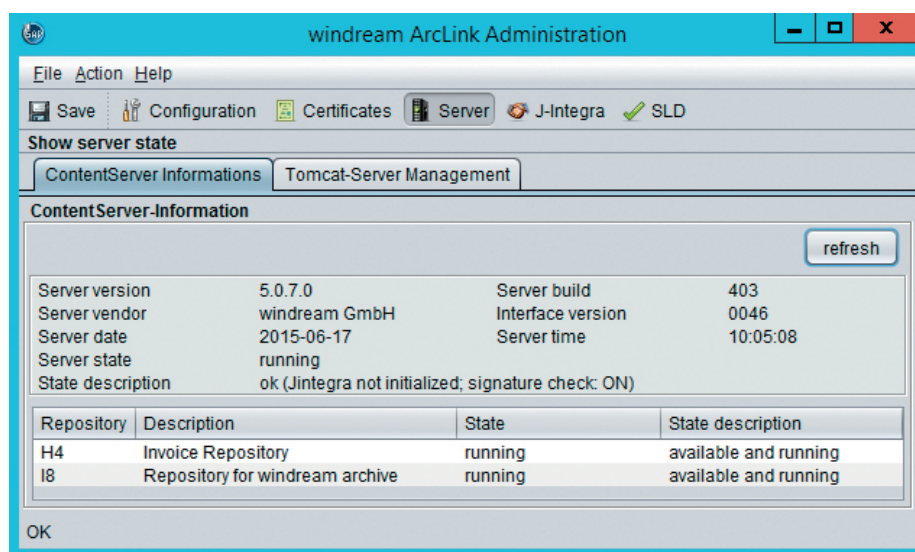
The certificate guarantees SAP and windream users a high investment security, since with this certificate, SAP AG confirms that the windream products are **fully compatible** with the products of the SAP portfolio. Furthermore, windream GmbH – this, too, is confirmed by the certificate – has been awarded the title of “Independent Software Vendor with Certified Integration” by SAP.



## windream ArcLink

### The archive interface for SAP and windream

windream ArcLink is the connection between the SAP ArchiveLink interface for SAP (SAP ECC 6.0) and the windream ECM system. Documents can first be imported to the windream ECM system via windream ArcLink and then linked to SAP receipts. This results in a **direct connection** between SAP-specific processing workflows and efficient Enterprise Content Management processes – without any compromises, since the interface can **seamlessly** link any desired document archived in windream to SAP business objects. This way, it is e.g. possible to assign individual documents saved in windream to specific SAP receipts.



windream ArcLink: administration of a linked SAP Content Server

## windream DirectLink

### Extended ECM potential for SAP users

windream DirectLink has been specifically designed to allow the **post-indexing** of documents linked to SAP receipts. The post-indexing process is carried out **on the basis of SAP meta-data** created for specific receipts. For example, in invoice management workflows, these data can consist of invoice numbers, supplier information, invoice dates or invoice amounts.

In windream, these meta-data can be used as **index properties** for the efficient identification and retrieval of receipts, provided they have been assigned to the corresponding receipts or documents. The index properties allow users to retrieve any desired document archived to windream at any time.



### Direct access to attachment lists with windream DirectLink

Documents saved to windream as attachments to SAP Business objects can be opened directly via attachment lists. For the creation of these **attachment lists**, paths to individually created windream folders can be configured automatically or manually.

Users working with the windream Web Portal can access the windream directory via an URL, to view the contained documents. The attachment lists also allow users to link **windream search profiles** to SAP business objects. Via these **links**, users can retrieve the document attachments of business objects, ad hoc and at any time.

### windream SAPcommand

#### Individualized range of functions with windream SAPcommand

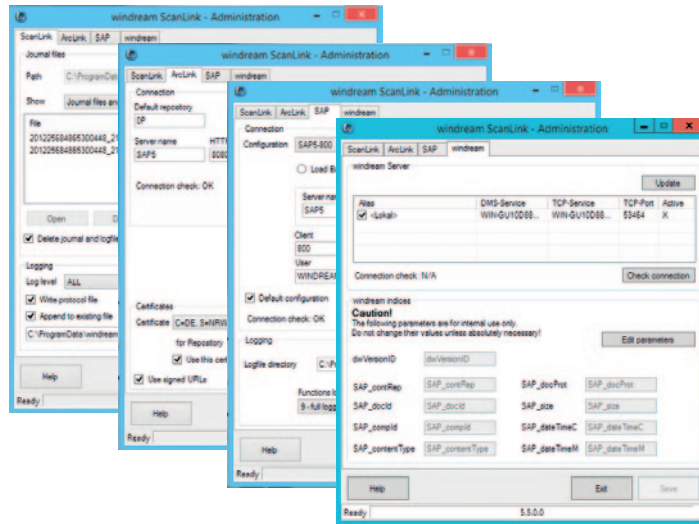
windream SAPcommand is the “**command center**” for configuring and managing the interaction between the windream ECM system and the SAP applications. windream SAPcommand offers everything that users have always been asking for: the **combination of different software environments into one completely integrated system**. With windream SAPcommand, SAP users can profit from the advantages of the windream ECM system – without having to say goodbye to their familiar IT environment.

windream SAPcommand allows users to **link all desired SAP-specific processes to documents saved in the ECM system**. The process can of course also be reversed. To link documents and SAP applications, pre-configured components are used.

#### Key Features:

- completely integrated software worlds
- efficient interaction between SAP applications and the windream ECM system
- efficient, SAP-certificated archive interface
- convenient linking of SAP receipts to windream documents
- extensive system configuration options

In this context, the architecture of the windream ECM system supports the use of SAP components in accordance with **the customer's individual requirements**. This results in a direct connection between SAP-specific processing workflows and efficient Enterprise Content Management, since windream SAPcommand seamlessly links the documents stored to the windream ECM system to SAP applications.



**windream SAPcommand: The “command center” for the interaction between windream and SAP**

This way, scanned or digitally created incoming documents – such as Microsoft Office documents or e-mails – as well as information stored to windream and fax messages can be archived compliantly and linked to SAP application receipts. Interfaces to systems such as Kofax Capture, QuickScan Pro and windream bizhub connect – the windream ECM solution for the Konica Minolta multi-function systems – for “early” or “belated” archiving processes are available by default.

The documents will be **indexed automatically** in the background, making manual adjustments by the user unnecessary. The indices can be used for identifying and retrieving documents in windream or in the SAP application. Furthermore, windream SAPcommand allows you to link incoming documents on the basis of barcodes and to launch **SAP business workflows** or **SAP standard capturing jobs**.

### Convenient System Management

All documents to be managed and the associated “jobs” can either be processed separately or as batches. Tasks selected for **batch processing** such as the storage and indexing of documents, barcode linking or the launching of SAP business workflows are continually monitored.

**Processing workflows** can be repeated via the windream functions, via the specific windream SAPcommand processes, and for SAP-specific functions. This option reduces the efforts required for the tracking and elimination of errors to a minimum. Especially SAP application managers are relieved of significant workloads, since potential processing errors can now be identified ad hoc and eliminated much faster than before. The **monitoring of all processes** of a processing chain is available for both incoming and outgoing SAP-specific documents.

### Journaling functions

For the processing of documents, the application creates **journals** containing all required information on documents and on the desired processing steps. It is also possible to represent dependencies between the single processing steps. Since the journals contain all relevant information required for processing, they can also be executed **regardless of the creation process**, i.e. at a later point of time. All functions required for the creation and execution of journals are contained in windream SAPcommand. The results of the processing workflows are also saved to the journals.

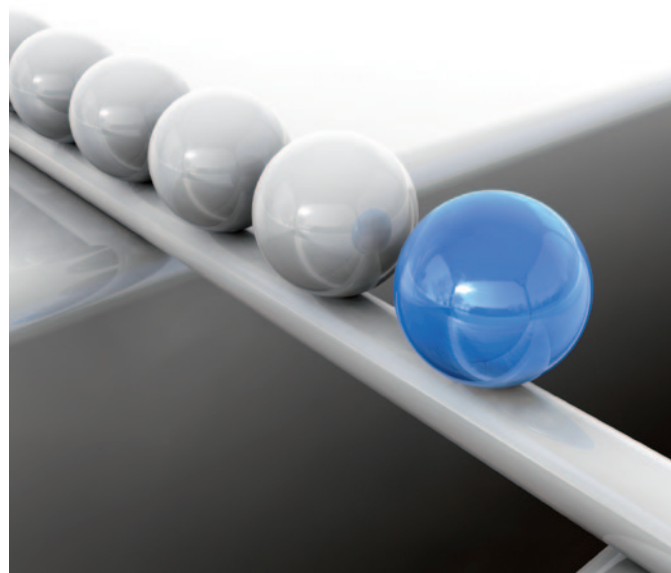
### Extensive configuration options

Extensive configuration options allow users to configure **any desired amount of SAP connections** to various target systems. All settings can be accessed via windream SAPcommand, however, the configuration is also possible without a specific user interface, **via a script**. The windream SAPcommand user interface offers a convenient possibility for viewing, editing and saving all configuration settings in a compliant manner. Furthermore, the user interface also offers a list of all available journals. The processing of a journal can be launched directly via the interface, at the click of one button.

## Summary

### Integrated software worlds

The windream solutions for SAP offer everything that users have always been asking for: the **combination various software environments** into one fully integrated system, allowing data transfer operations without limitations. This allows SAP users to profit from the advantages of a top-modern product like windream – without having to say goodbye to their familiar IT environment.





## Rely on the Technological Market Leader

If you plan to invest in an innovative, efficient and easy to handle ECM-system, or if you need further information on how to optimise your business processes concretely, we should get to know each other.

In the market sector of ECM-software suppliers, windream GmbH is the technologically leading manufacturer. With the windream ECM-system based on the patented Virtual File System technology (VFS), we have created an unrivaled tool for administering your complete company knowledge. Our software is easy to handle, effective, and future-proof. We have 20 years experience in successful software solutions development for enterprises of any size. Medium-sized companies and multinational corporations as well rely on our top quality products and on our technological know-how.

**Look and see!**

### windream GmbH

Wasserstraße 219  
44799 Bochum  
Germany

Phone: +49 234 9734-0  
Fax: +49 234 9734-520

E-Mail: [info@windream.com](mailto:info@windream.com)



# Managing Documents

[www.windream.com](http://www.windream.com)